



NEEP21 Polyclonal Antibody

Catalog No	YP-Ab-12748
Isotype	IgG
Reactivity	Human;Mouse;Rat
Applications	WB;IHC;IF;ELISA
Gene Name	NSG1
Protein Name	Neuron-specific protein family member 1
Immunogen	The antiserum was produced against synthesized peptide derived from human NSG1. AA range:112-161
Specificity	NEEP21 Polyclonal Antibody detects endogenous levels of NEEP21 protein.
Formulation	Liquid in PBS containing 50% glycerol, 0.5% BSA and 0.02% sodium azide.
Source	Polyclonal, Rabbit,IgG
Purification	The antibody was affinity-purified from rabbit antiserum by affinity-chromatography using epitope-specific immunogen.
Dilution	WB: 1/500 - 1/2000. IHC: 1/100 - 1/300. ELISA: 1/20000.. IF 1:50-200
Concentration	1 mg/ml
Purity	≥90%
Storage Stability	-20°C/1 year
Synonyms	NSG1; D4S234; Neuron-specific protein family member 1; Brain neuron cytoplasmic protein 1
Observed Band	26kD
Cell Pathway	Membrane ; Single-pass type II membrane protein . Golgi apparatus, trans-Golgi network membrane . Endosome membrane . Cell projection, dendrite . Early endosome membrane . Late endosome membrane . Lysosome lumen . Recycling endosome membrane . Cytoplasmic vesicle membrane . Golgi apparatus, Golgi stack membrane . Endosome, multivesicular body membrane . Endoplasmic reticulum membrane . Endocytosed from the cell surface, thus enters into early endosomes, trafficks to late endosomes and degrades in lysosomes (By similarity). Endoplasmic reticulum targeting is essential for apoptosis (PubMed:20599942). Found in both stationary and motile endosomes. A previous study supports a type I membrane protein topology (By similarity). .
Tissue Specificity	Amygdala,Brain,Cerebellum,Testis,
Function	similarity:Belongs to the NSG family.,
Background	similarity:Belongs to the NSG family.,

**matters needing attention**

Avoid repeated freezing and thawing!

Usage suggestions

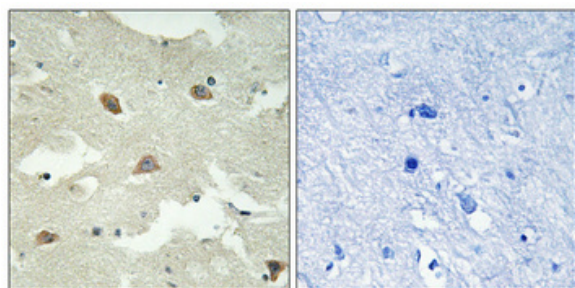
This product can be used in immunological reaction related experiments. For more information, please consult technical personnel.



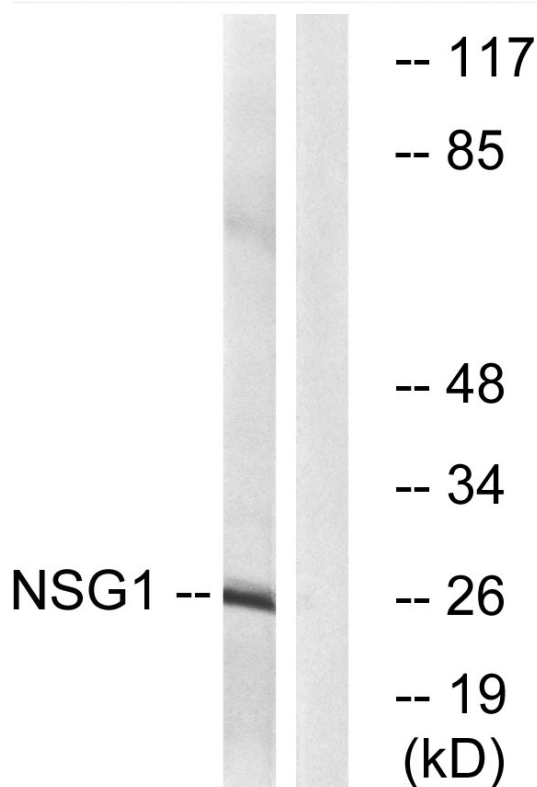
Products Images



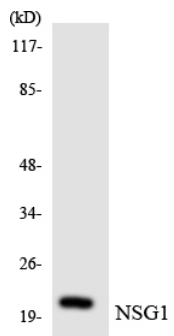
Western Blot analysis of various cells using NEEP21 Polyclonal Antibody diluted at 1:2000



Immunohistochemical analysis of paraffin-embedded Human brain. Antibody was diluted at 1:100(4° overnight). High-pressure and temperature Tris-EDTA, pH8.0 was used for antigen retrieval. Negative control (right) obtained from antibody was pre-absorbed by immunogen peptide.



Western blot analysis of lysates from COLO cells, using NSG1 Antibody. The lane on the right is blocked with the synthesized peptide.



Western blot analysis of the lysates from K562 cells using NSG1 antibody.